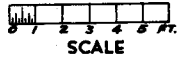


# COMET'S

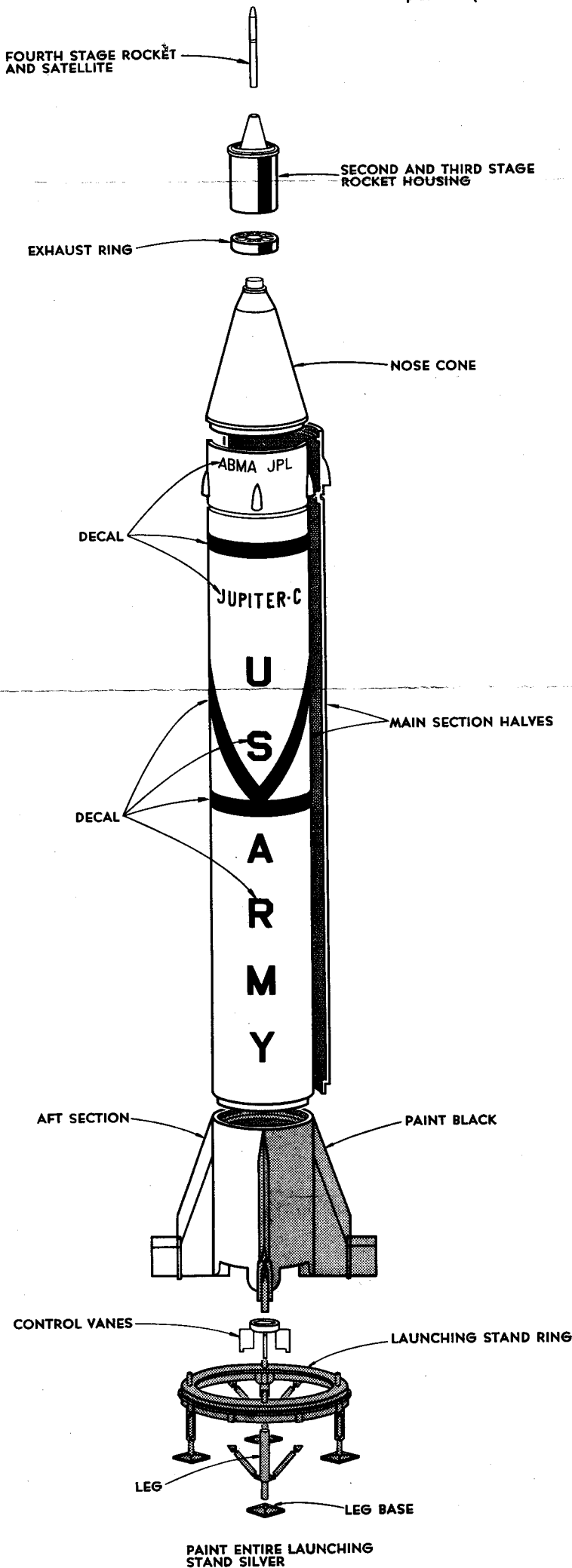
## ALL PLASTIC SCALE MODEL MISSILE KIT OF THE U. S. ARMY JUPITER C MISSILE

KIT PL 804



### ASSEMBLY INSTRUCTIONS

To assemble model progressively, first assemble launching platform. (See instructions reverse side).



### MISSILE

- 1 Trim any projections or roughness of part edges with modeler's knife. So that you may avoid unnecessary cementing, it is advisable to become familiar with the fit-relationship of all parts. This is the best assurance in producing a neat, beautifully finished model.
- 2 Cement main section halves together, holding assembly with rubber bands until dry. While drying, complete the next two steps.
- 3 Cement control vanes into ring provided at bottom of aft section unit.
- 4 Cement exhaust ring to second and third stage rocket housing being sure to align score lines.
- 5 Nose cone and aft section are cemented to main section next. Do not cement satellite and 2nd/3rd stage rocket section to missile. These two units should be left removable for exhibition purposes.
- 6 Paint the two areas of the aft section black as indicated on illustration. The second area is directly opposite the one shown.
- 7 After paint has dried, wet decal sheet. When decals have loosened sufficiently, slide them into their respective positions shown on illustration and molded on missile.

### LAUNCHING STAND

- 1 Remove any roughness of part edges with knife. Place the launching stand ring upside down and attach all four legs to their sockets with cement.
- 2 Cement leg base to each leg as illustrated, being sure edge of each base is aligned to edge of blast deflector opening.
- 3 Paint entire launching stand silver. Comet's 'Paint for Plastic' is ideal for this purpose.
- 4 Fit the completed launching stand into four small holes provided over blast deflector opening of launching platform. Rest missile on the four support pins molded onto launching stand ring.

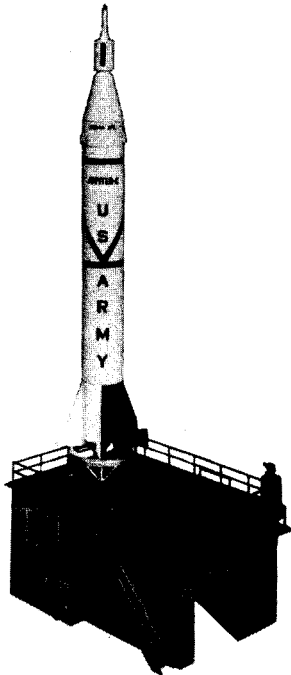
NOTE: Very little cement is needed to hold parts together. Use it sparingly (be sure to keep it away from missile outside surfaces) and you will produce a very neat model.

**USE COMET PLASTIC CEMENT AND PAINT FOR BEST RESULTS**



COMET MODEL HOBBYCRAFT INC., CHICAGO 16, ILL.

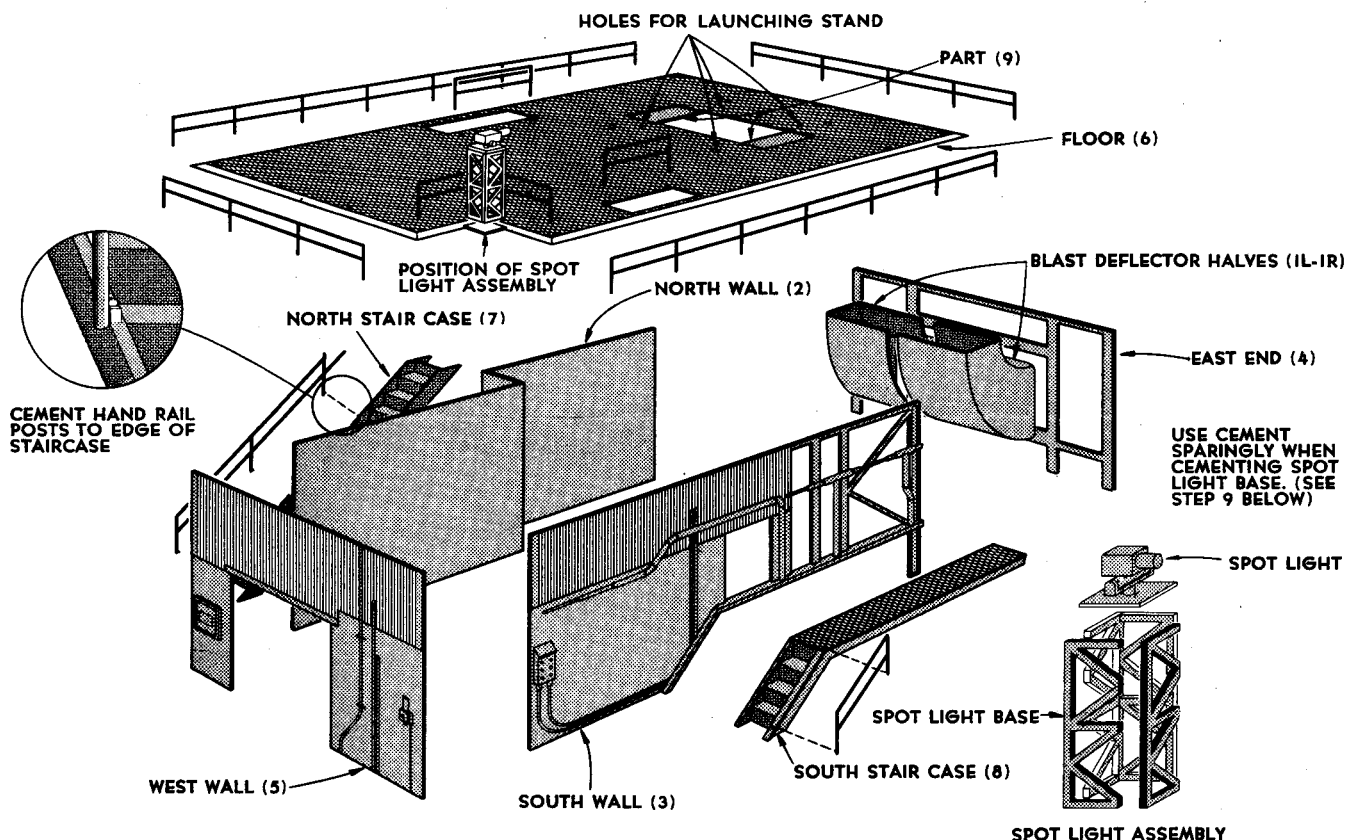
# U. S. ARMY JUPITER C MISSILE



Primarily designed as a formidable intermediate range ballistic missile and known originally as the Redstone, the Jupiter C rocket is a progressive development of the U. S. Army weapon. The Jupiter C successfully placed the U. S. Explorer I, III and IV satellites in orbit, the first being launched at the end of January, 1958.

The four stage carrier vehicle is characterized by a cylindrical sheet aluminum body. The large first stage section houses alcohol, peroxide and liquid oxygen tanks containing fuel for its North American Rocketdyne rocket engine. This stage powers the rocket to the upper rarified regions of the atmosphere, where the second, and third stages fire, followed by a separation of the fourth stage. The second and third stages are contained in the "bucket" section at the top of the rocket. The "bucket" housing encloses 15 six inch dia. rockets, eleven firing in the second stage and four in the third. The fourth stage is enclosed in the aft section of the 6 ft. 6 in. cylindrical satellite which is now orbiting the earth.

## LAUNCHING PLATFORM



## ASSEMBLY INSTRUCTIONS

- 1 Check exploded illustration to be sure that all parts fit properly and are correctly matched.
- 2 Cement blast deflector halves (IL & IR) together and then attach deflector flush into opening of east end (4).
- 3 Apply cement to top edges of deflector and east end, then attach carefully in position on bottom of platform floor (6).
- 4 Cement north wall (2) against inside edge of east end and against floor bottom.
- 5 Next, cement south wall (3) against inside edge of east end and against floor bottom.
- 6 Attach west wall (5) to outside edges of north, south walls and against floor bottom.
- 7 Apply cement only to attaching side of north stair case (7) and place carefully into position onto north wall (2).
- 8 Cement south stair case (8) to south wall (3) and attach handrails to both stair cases. (See sketch above.)
- 9 Cement one side of spot light base onto another as shown in detail above and attach light on top of base. Cement assembly onto square pad over west wall. Small red "Fire" decal may be placed later over small rectangle molded on north wall.
- 10 Match all hand rails against holes provided for them on floor as each is cemented in place. It is best to attach all inside rails first and then follow with outside railing. Apply cement carefully into each hole with a toothpick so to insure a neat cement job.
- 11 Cement two small rectangular parts (9) to each side of blast deflector opening as shown.